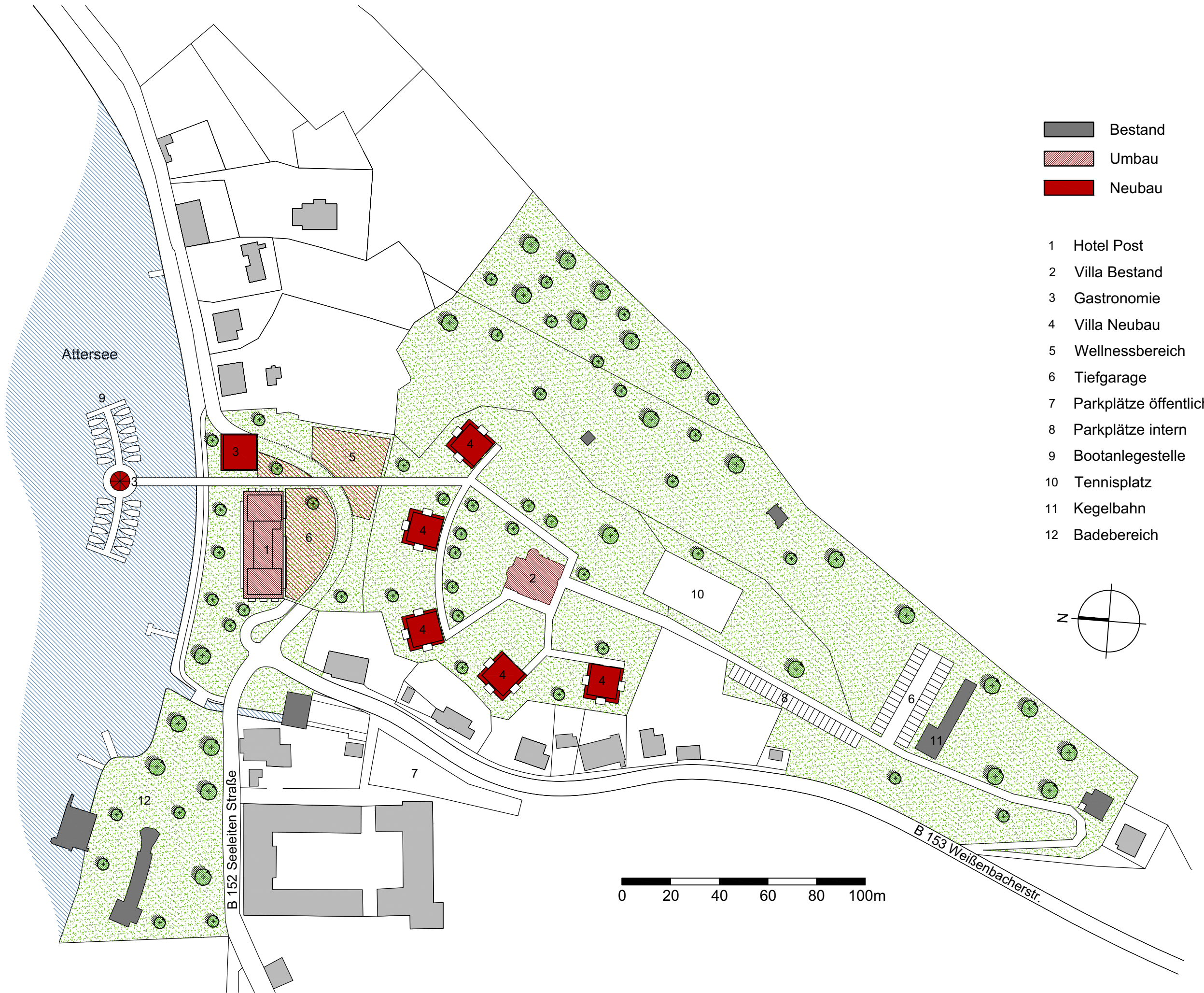


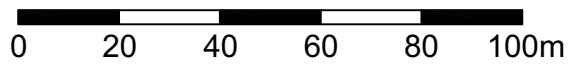
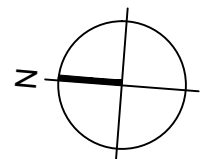


Perspektive 1



- Bestand
- Umbau
- Neubau

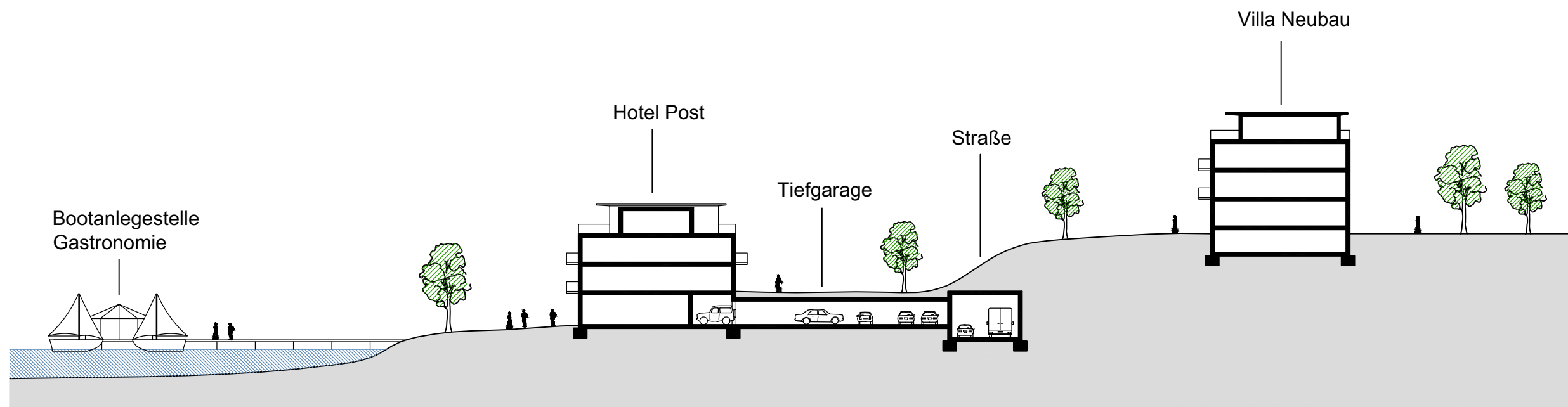
- 1 Hotel Post
- 2 Villa Bestand
- 3 Gastronomie
- 4 Villa Neubau
- 5 Wellnessbereich
- 6 Tiefgarage
- 7 Parkplätze öffentlich
- 8 Parkplätze intern
- 9 Bootanlegestelle
- 10 Tennisplatz
- 11 Kegelbahn
- 12 Badebereich



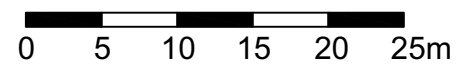
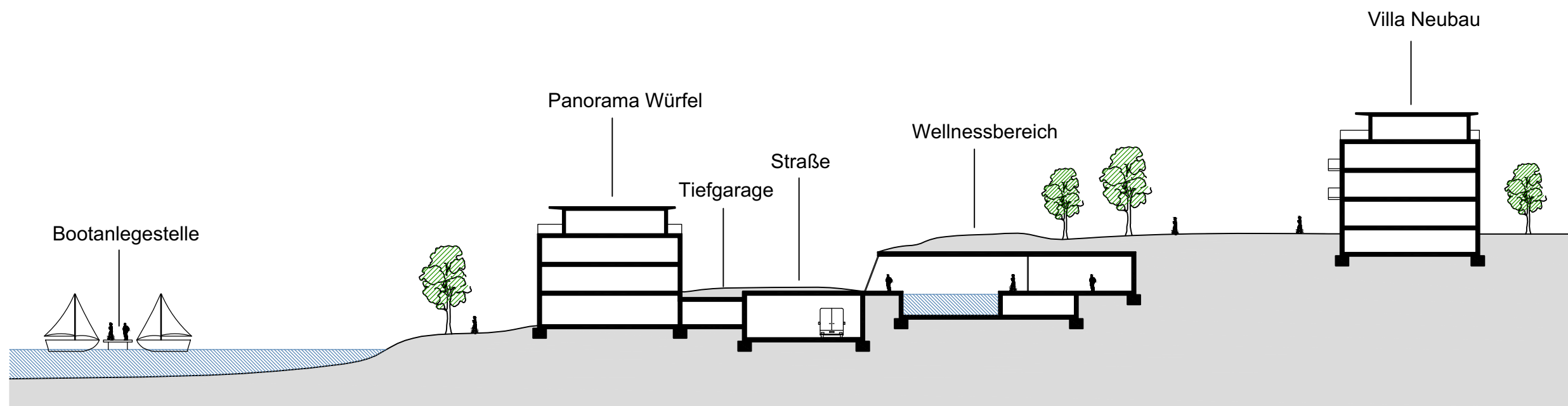
Attersee

B 152 Seeleiten Straße

B 153 Weißenbacherstr.



Geländeschnitt 1 1:500

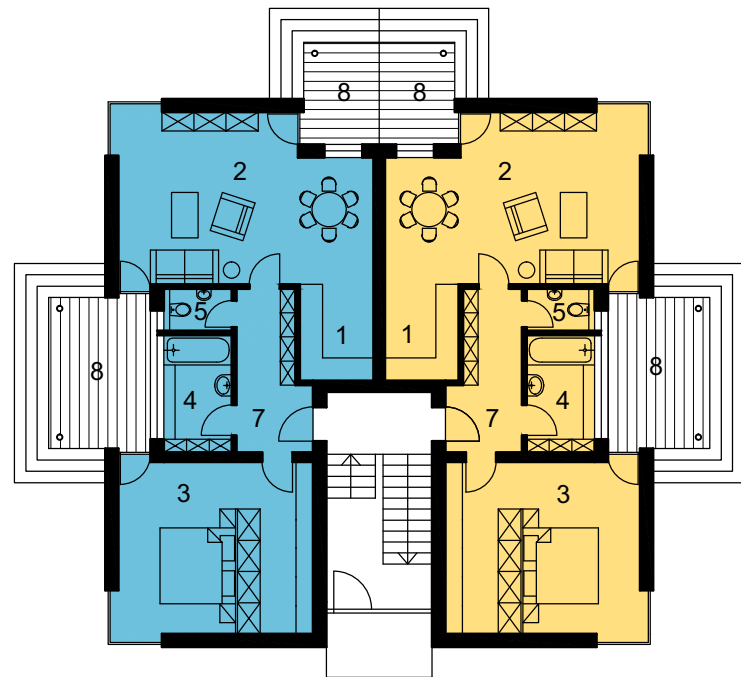


Geländeschnitt 2 1:500

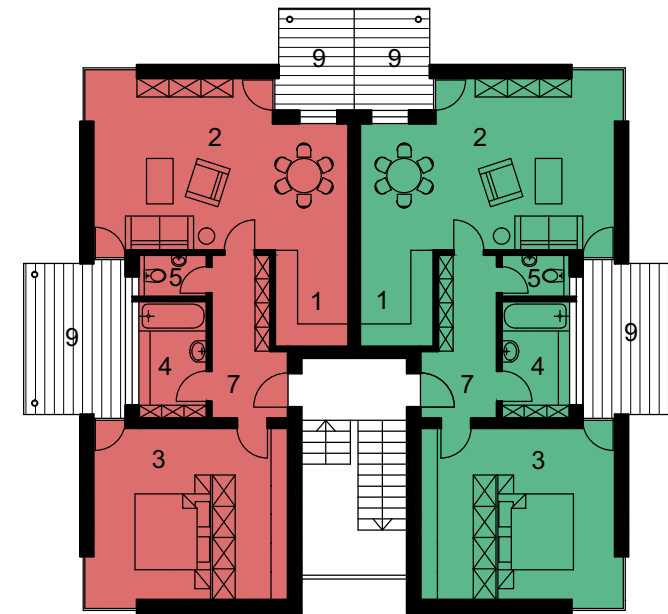


Perspektive 2

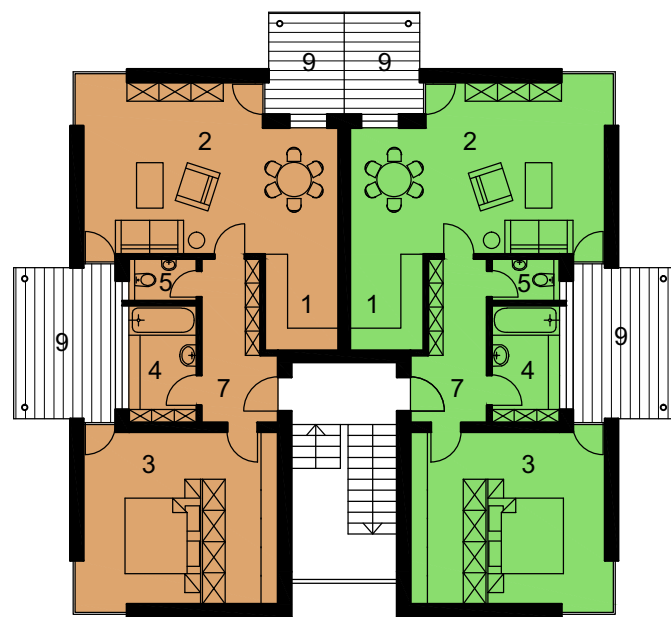
Villa Neubau



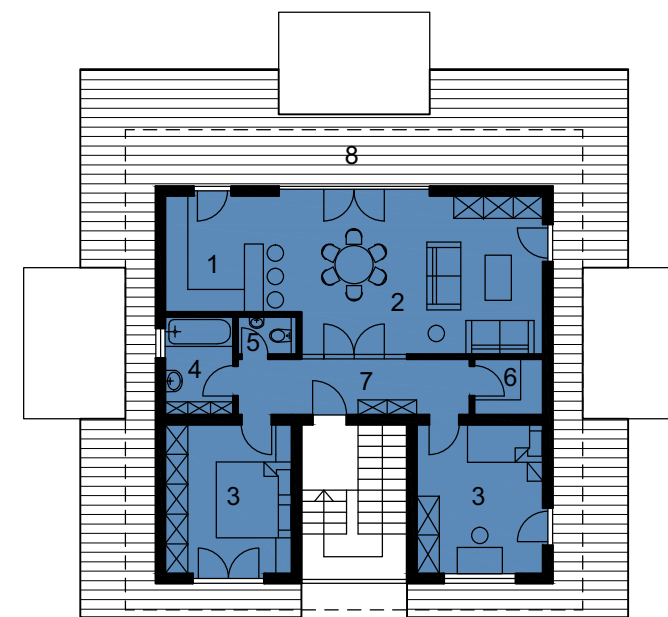
Ebene 0 1:200










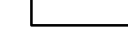
Ebene 1 1:200



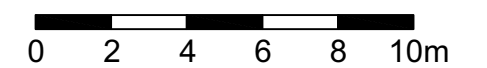
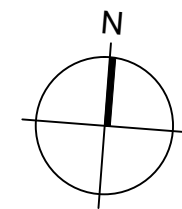
Ebene 2 1:200



Ebene 3 1:200

	Top 1:	73,84m ²
	Top 2:	73,84m ²
	Top 3:	73,84m ²
	Top 4:	73,84m ²
	Top 5:	73,84m ²
	Top 6:	73,84m ²
	Top 7:	84,78m ²
	Allgemein	

- 1 Kochen
- 2 Essen / Wohnen
- 3 Zimmer
- 4 Bad
- 5 Toilette
- 6 Abstellraum
- 7 Diele
- 8 Terrasse
- 9 Balkon
- 10 Wintergarten
- 11 Gastronomie
- 12 Küche Gastro
- 13 Wellness
- 14 Technik















Perspektive 3



Perspektive 4

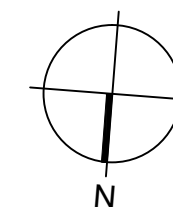
Umbau Hotel Post

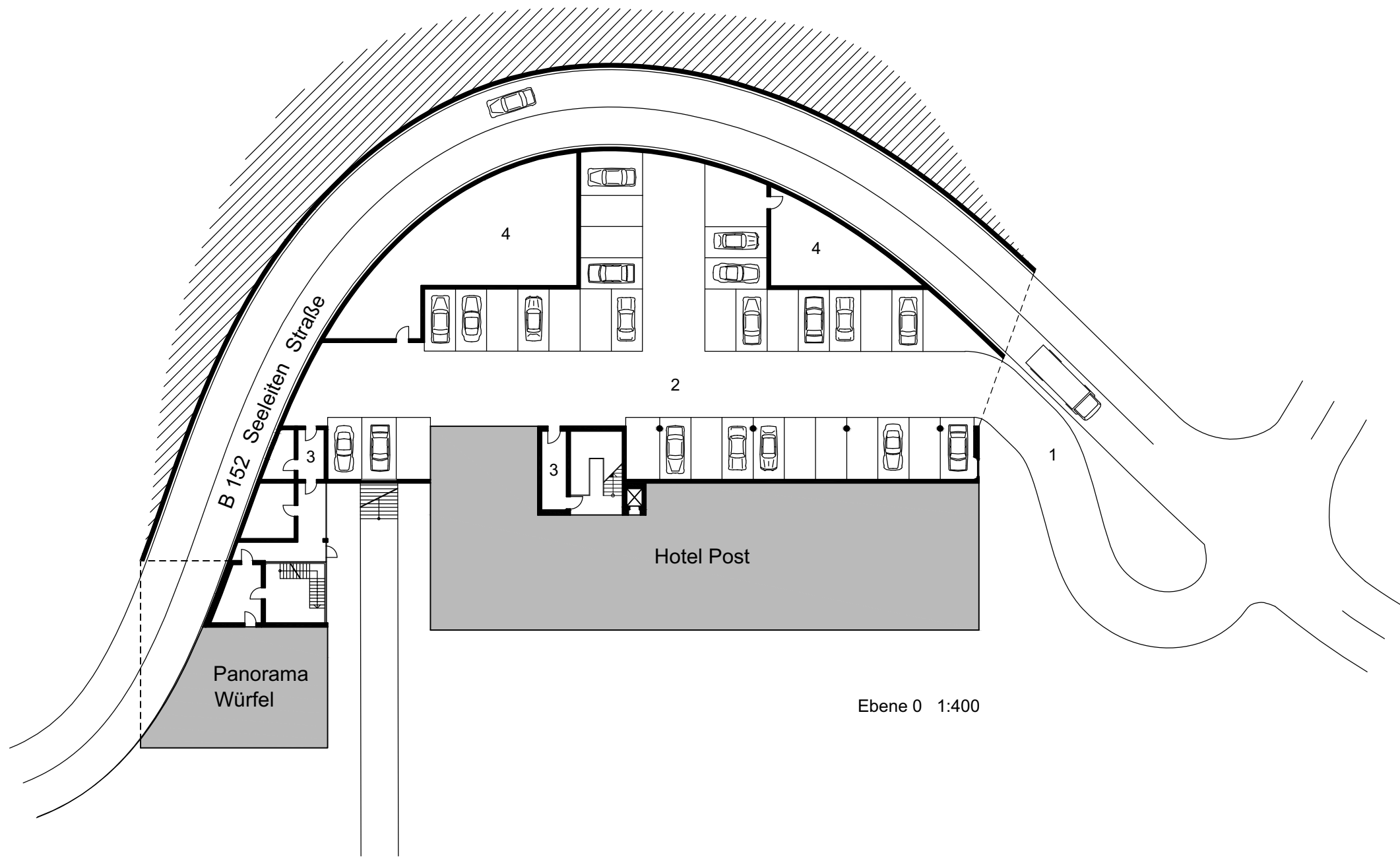
	Top 5:	67,69m ²
	Top 6:	61,35m ²
	Top 7:	63,41m ²
	Top 8:	47,81m ²
	Top 9:	48,75m ²
	Top 10:	45,14m ²
	Top 11:	65,34m ²
	Top 12:	65,62m ²
	Top 13:	50,66m ²
	Allgemein:	



- 1 Kochen
- 2 Essen / Wohnen
- 3 Zimmer
- 4 Bad
- 5 Toilette
- 6 Abstellraum
- 7 Diele
- 8 Terrasse
- 9 Balkon
- 10 Wintergarten
- 11 Gastronomie
- 12 Küche Gastro
- 13 Wellness
- 14 Technik

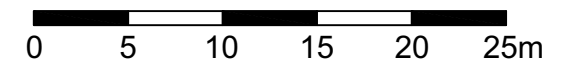
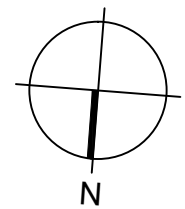
Ebene 1 1:200





Tiefgarage

- 1 Zufahrt
- 2 Parken
- 3 Schleuse
- 4 Heizung / Technik



Ebene 0 1:400

Atelier **L**abacher



Architekt Dipl. Ing. Gerhart Labacher

staatlich befugter und beeideter Ziviltechniker

Rainbergstraße 5, 5020 - Salzburg, Österreich

Tel.: 0662 / 844748 - 0, Fax: 0662 / 844748 - 25

e-mail: arch.labacher@aon.at; Homepage: www.architekt-labacher.at