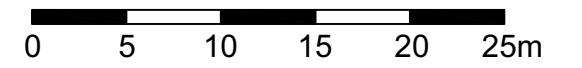
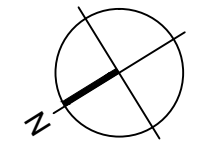




Ansicht Ost



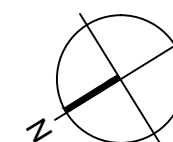
Lageplan

- Top 1: 100,47m²
- Top 2: 79,21m²
- Top 3: 91,21m²
- Allgemein
- WC: 21,19m²
- Depot: 57,99m²
- Gastro: 138,22m²

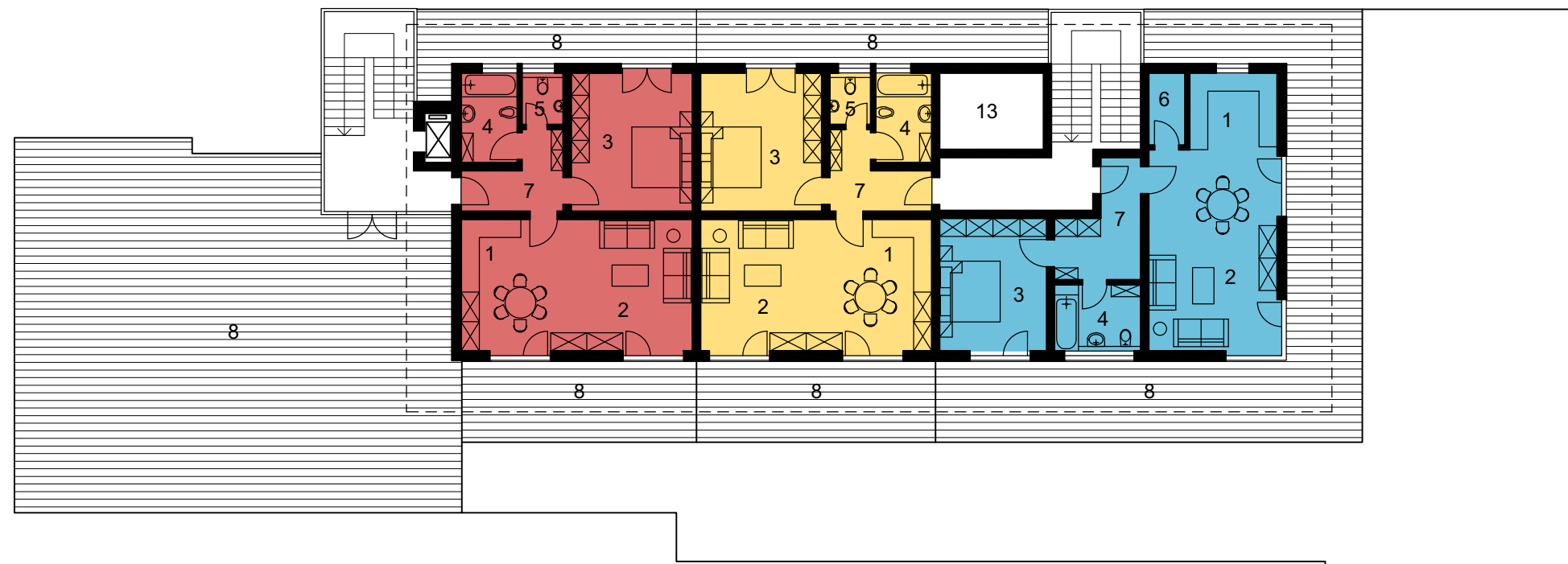


- 1 Kochen
- 2 Essen / Wohnen
- 3 Zimmer
- 4 Bad
- 5 Toilette
- 6 Abstellraum
- 7 Diele
- 8 Terrasse
- 9 Wintergarten
- 10 Gastronomie
- 11 Küche Gastro
- 12 Wellness
- 13 Technik

Ebene 0 1:200

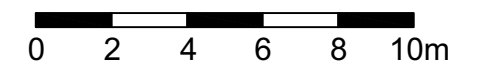
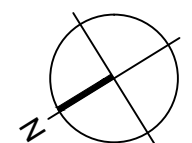


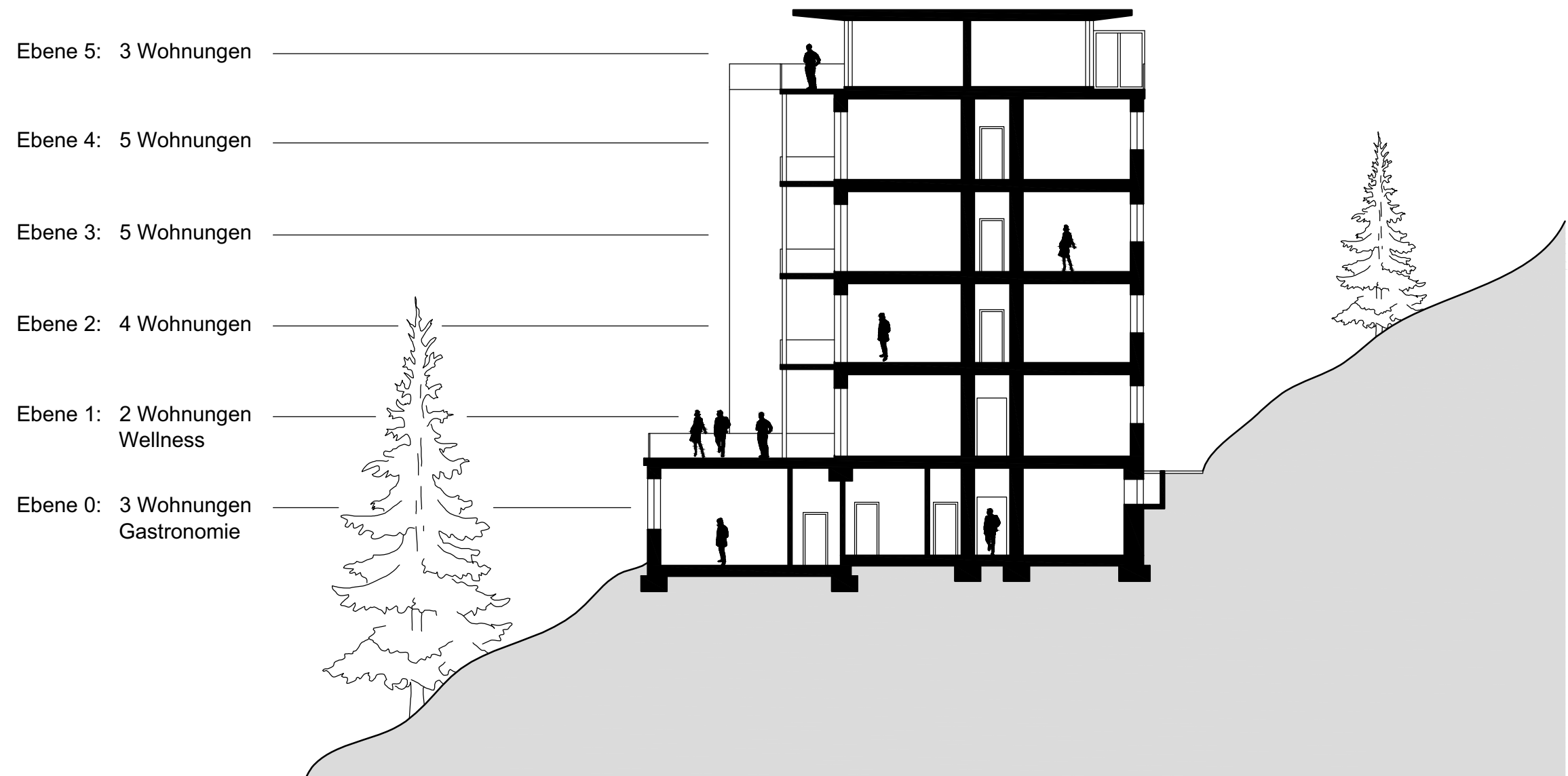
- Top 20: 70,83m²
- Top 21: 67,29m²
- Top 22: 67,29m²
- Allgemein



- 1 Kochen
- 2 Essen / Wohnen
- 3 Zimmer
- 4 Bad
- 5 Toilette
- 6 Abstellraum
- 7 Diele
- 8 Terrasse
- 9 Wintergarten
- 10 Gastronomie
- 11 Küche Gastro
- 12 Wellness
- 13 Technik

Ebene 5 1:200

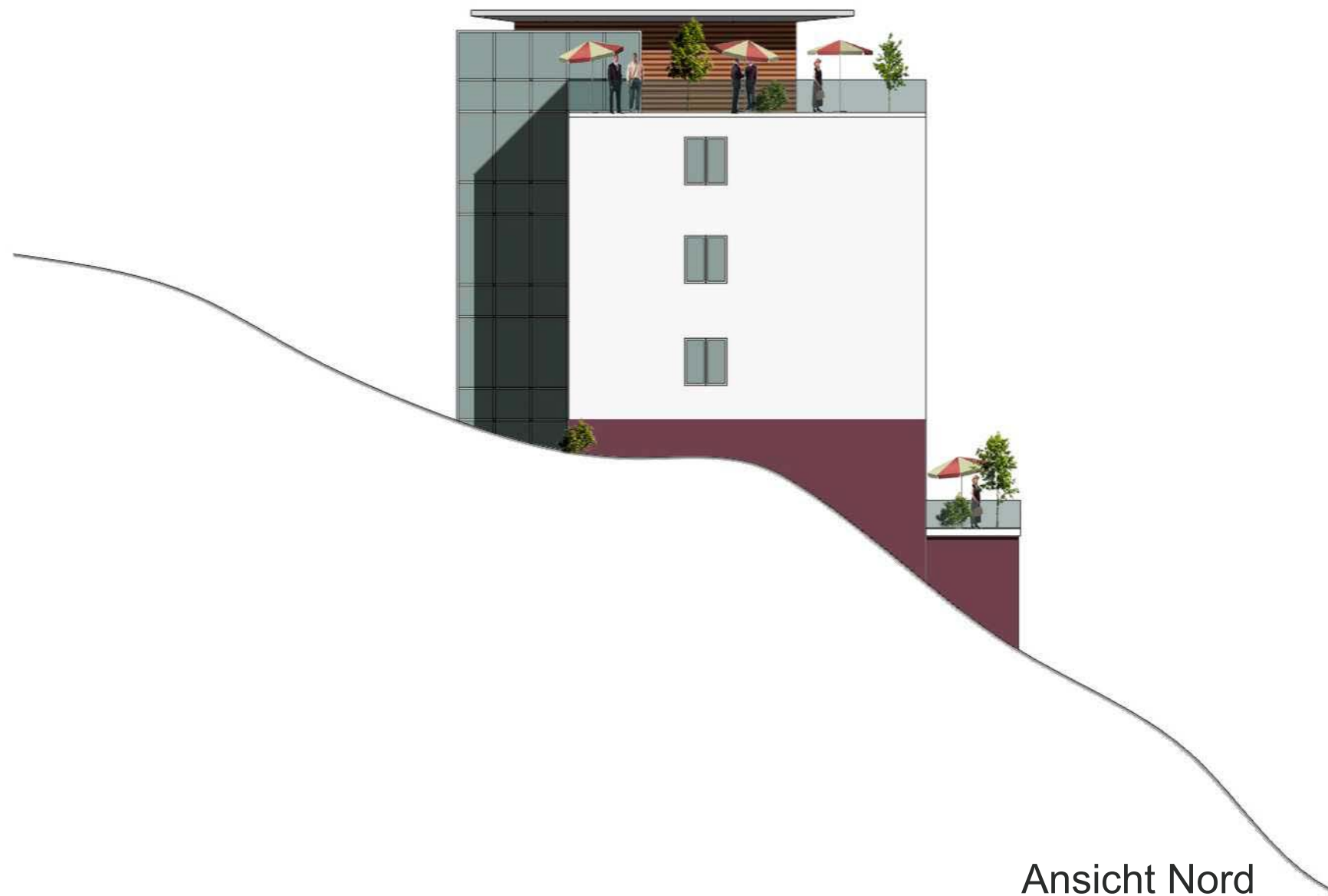




Schnitt Gebäude 1:200



Ansicht Süd



Ansicht Nord

Atelier **L**abacher



Architekt Dipl. Ing. Gerhart Labacher

staatlich befugter und beeideter Ziviltechniker
Rainbergstraße 5, 5020 - Salzburg, Österreich
Tel.: 0662 / 844748 - 0, Fax: 0662 / 844748 - 25

e-mail: arch.labacher@aon.at; Homepage: www.architekt-labacher.at